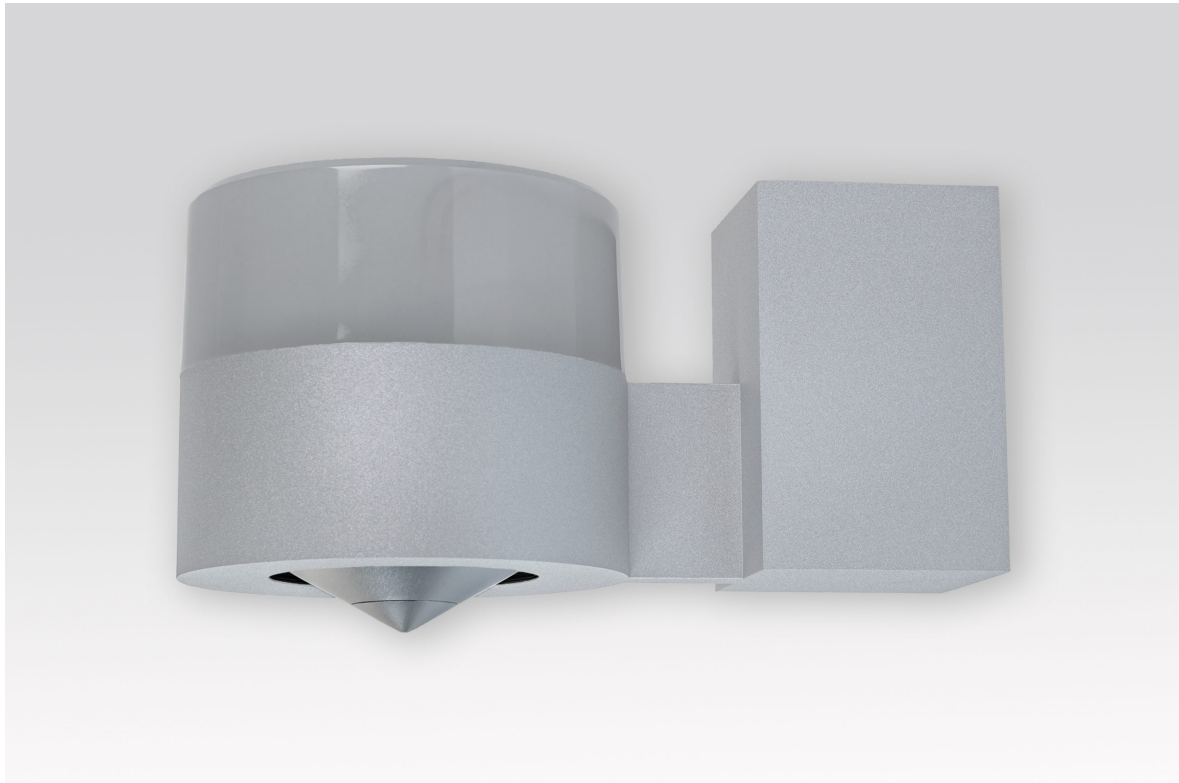


## CONO solo

NewTec  
Design : Audio



## CONO solo

### **The wall-mounting speaker with exceptional audio performance.**

The CONO solo is primarily used when the architectural circumstances do not allow any installation on the ceiling. For example in atriums without suspension possibilities, listed buildings or simply in order to complement existing lighting systems on the wall. The installation height is recommended at about 2,4 meters or higher. This way the sound source remains always above the ears of the listeners, resulting in optimum sound quality in all listening positions.

# Technical Data

## Solura 50

Type	Wall mounted
Principle	One way system
Dimensions W x L X H	ø134 x 130 x 220mm
Weight	1,5 kg
Enclosure	Aluminum
Colours	silver, white
Equipment	1 Newtec KA10-16 by Scanspeak
Impedance	16 Ω
Nominal / Music power	50 Watt RMS / 90 Watt
Nominal sensitivity ( 1 W , 1 m )	83,4 dB (+6 dB to 360°) by 16 Ω
Maximum SPL	100 dB ( active high pass 120 Hz / 18 dB – Oktave)
Frequency response	105 - 20.000 Hz (+/-3 dB)
Connectors	Press-Terminal

## CONO solo S

Type	Wall mounted
Principle	One way system
Dimensions W x L X H	ø134 x 130 x 220mm
Weight	1,9 kg
Enclosure	Aluminium
Colours	silver, white
Equipment	1 x NewTec M13 - 8633 by Scanspeak
Impedance	8 Ω
Nominal / Music power	100 RMS / 180 Watt
Nominal sensitivity ( 1 W , 1 m )	82,8 dB (+6dB to 360°)
Maximum SPL	105 dB ( active high pass 120 Hz / 18 dB – Oktave)
Frequency response	110 – 23.000 Hz ( +/- 3 dB)
Connectors	Press-Terminal

**CONO solo V**

Type	Wall mounted
Principle	one way speaker
Dimensions W x L X H	134mm x 224 mm x 119 mm
Weight	2,6 kg
Enclosure	Aluminium
Colours	silver, white - every RAL color on request
Equipment	1 Newtec KA10-4 by Scanspeak
Impedance	100 Volt / 2000 $\Omega$ to 250 $\Omega$
Nominal / Music power	2,5-5-10-20 Watt adjustable
Nominal sensitivity ( 1 W , 1 m )	86,2 dB (+6dB to 360°)
Maximum SPL	99,5 dB
Frequency response	85 – 21.000 Hz ( +/- 3 dB)
Connectors	print clips